

Quick Start Guide

EPR-1001

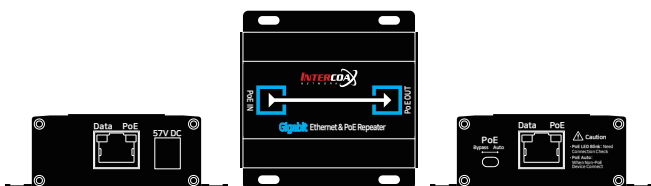
Please carefully read the instruction manual before use. Depending on the model, the image and the actual look of the product may vary.

Features

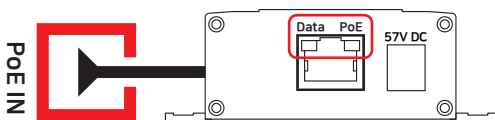
- Gigabit Ethernet & PoE Repeater
- The distance can be extended up to 150 meters on a 1Gbps basis (between EPR-1001 devices).
- IEEE802.3af (15W) / IEEE802.3at (25.5W)
- Up to 60W PoE output (Bypass Mode and using 57VDC / 1.2A Power supply)
- PoE output Bypass/Auto Switch
- PoE, PoE+ Input (From PoE Switch, PoE Injector)
- Surge Protection
- DC input supported (DC48~57V)

Installation Guide

1. Product Details

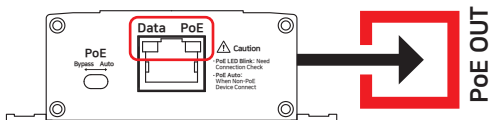


- EPR-1001 is powered by power supply or PSE (Power Sourcing Equipment) such as PoE Switch or Injector.
- Connect UTP cable from PSE to “PoE IN” port. Data/PoE LED indicates working status.



- Connect UTP cable from Camera to “PoE OUT” port and Data/PoE LED indicates working status. When connecting to a non-PoE device, leave the PoE switch button on **Auto** mode.

→ Never set the PoE switch button on **Bypass** mode unless it is connected to a PoE device.





Specification

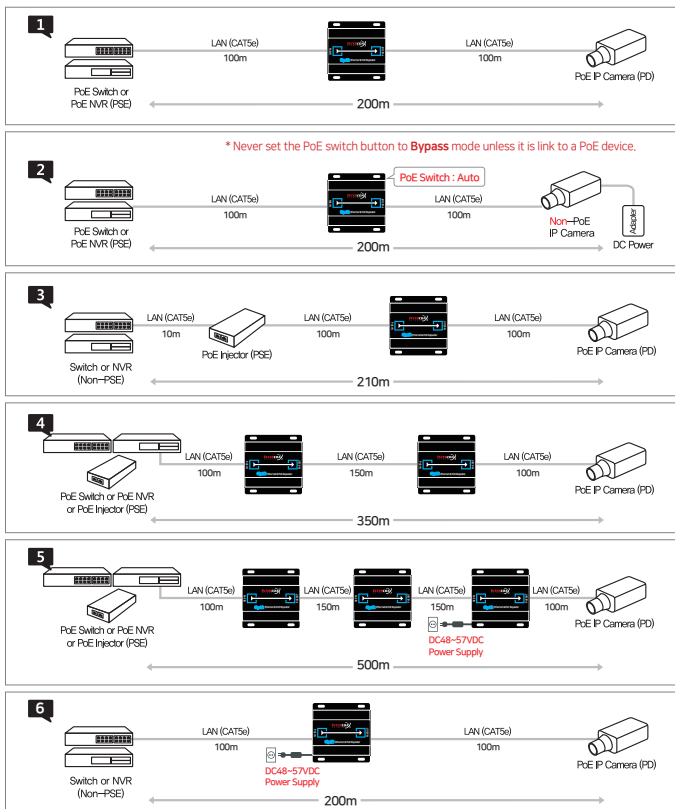
Model		EPR-1001
Interface	LAN / PoE In	1 x RJ45 - 10/100/1000 Base-T with Auto-detect MDIX
	LAN / PoE Out	1 x RJ45 - 10/100/1000 Base-T with Auto-detect MDIX
Transmission Rate		1Gbps Full Duplex
Transmission Distance		100m ** (150m)
LED Indication	Ethernet	1 x Data(Green)
	Power	1 x PoE(Yellow)
PoE	Standards	IEEE802.3af / IEEE802.3at
	Max. Power	Max. 25.5W (PoE) / 60W (DC 57V/1.2A)
Mechanical	Dimension	82(L) x 83(W) x 28(H)mm
	Weight	118g
Environment	Operating Temp	-20 ~ 60°C
	Storage Temp	-20 ~ 80°C
	Relative Humidity	10% ~ 90%

→ ******() : Max. distance between Intercoax PoE Repeaters

LED Indicators

Indicator	Color	Function
Data		Blinking : Ethernet Data Act
PoE		Power on PoE → If the PoE power fails, the LED will blink. Please check the cable and connected devices

Applications



- Transmission distance may vary depending on the type and quality of cable, use of power and environmental condition.

Caution

- Please install the device following the installation guide.
- Do not touch the device and cable with wet hands.
- Keep away from moisture and shock.
- Do not install near any heat sources such as radiators, heat registers, stoves or other apparatus that produce heat.
- Indoor use only.
- Do not use for other purposes.
- Do not disassemble or modify this device.
- Do not put any sticker or paint on it.
- If this device is defective or malfunctioning, please unplug the power adapter immediately and contact dealer or service center.

Warranty

- This device has passed the quality control and product inspection.
- Please install and use according to the installation guide.
- The warranty period for this product is 24 months from the date of purchase.
- If this device is defective or malfunctioning, please unplug the power adapter immediately and contact dealer or service center.
- Any damages or breakage from user's abuse, accident, modification or natural disasters will not be covered manufacturer's warranty.



INTERCOAX
NETWORK
Intercoax Co., Ltd.

Please visit below website for more detailed information.

Web : <http://www.intercoax.com>

E-mail : info@intercoax.com

Tel : 031. 365. 3133~4

Fax : 031. 365. 3135

This device complies with part 15 of the fcc rules. Operation is subject to the following two conditions :

- (1) This device may not cause harmful interference, and
- (2) This device must accept any interference received including interference that may cause undesired operation