

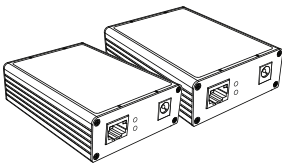
Quick Start Guide

FLX-11T / FLX-11R

Please read carefully the instruction manual before use. Contents of this manual are subject to change without prior notice for reasons such as functionality enhancements.

Rev.1.0

Package



FLX-11T (Transmitter)
FLX-11R (Receiver)

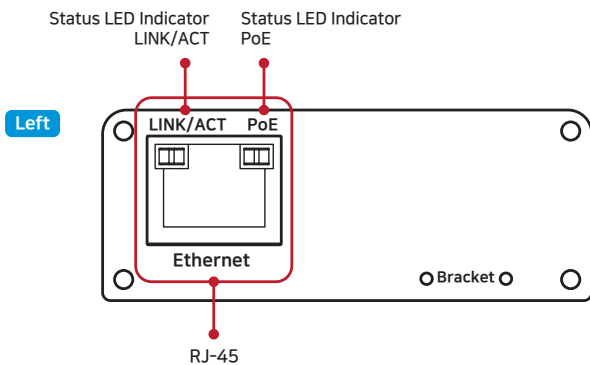
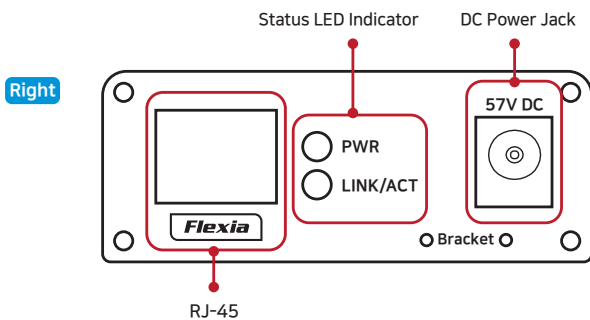


Bracket



Quick Start Guide

Hardware Overview



LED Indicators

Indicator	Color	Function
PWR	Green	DC Link (PoE or DC Power adapter)
LINK/ACT	Blue	On/Blinking : Data Link/Act (UTP Flexia Line)
LINK/ACT	Green	On/Blinking : Data Link/Act (Ethernet Line)
PoE	Green	PoE Output On

Overview

FLX-11 Series are High-Speed, long reach Ethernet & PoE extender that makes possible to transmit the Ethernet signal and PoE up to 500m through UTP(Cat 5e or better)cable.

It is cost-effective and time saving solution to migrate existing analog system to IP based system since FLX-11 series support easy installation utilizing the existing UTP cable or UTP bundle cables.

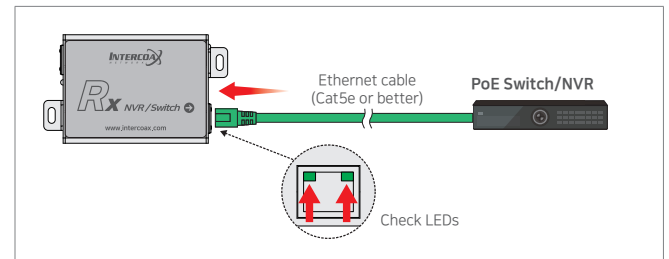
With long reach transmission feature, the device makes to overcome 100 meters distance limitation easily and reduces the construction cost significantly compared with fiber optic configuration.

Features

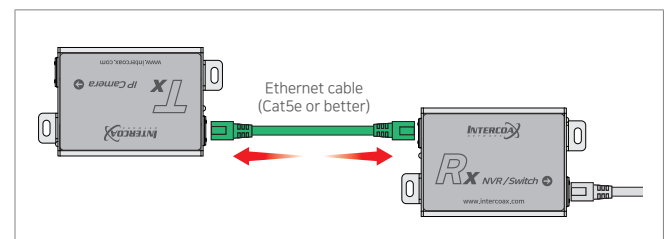
- Long reach Ethernet & PoE extension over existing UTP(Cat 5e or better) cable
- Data + Power over UTP(Cat 5e or better) cable
- Data and PoE distance up to 500 m
- 100Mbps Full Duplex
- Support PoE, PoE+ PSE output to PoE Camera. (FLX-11T model only)
- Support PoE, PoE+ PD input (25.5W) from PoE Switch / PoE NVR (FLX-11R model only)
- Multicast supported
- LED Indication (Data, Power)
- Plug & Play
- Surge Protection
- Compact design

Installation Guide

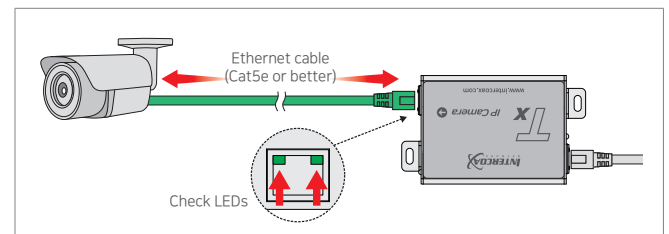
1. Connect UTP cable (Cat5e or better) from PoE Switch/NVR to FLX-11R(Ethernet). Check LEDs on FLX-11R.



2. Connect UTP cable (Cat5e or better) from FLX-11R(Flexia) to FLX-11T(Flexia).

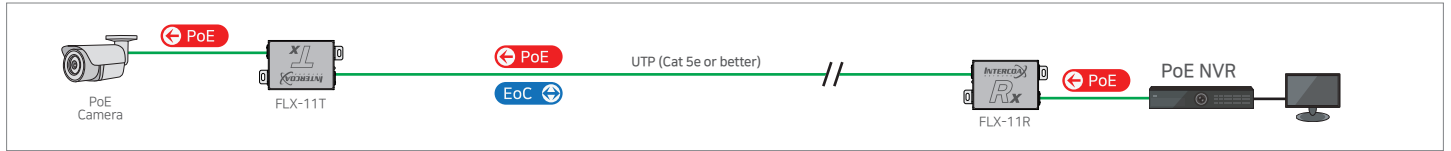


3. Connect UTP cable (Cat5e or better) from FLX-11T(Ethernet) to IP Camera (PoE Model Only). Check LEDs on FLX-11T.

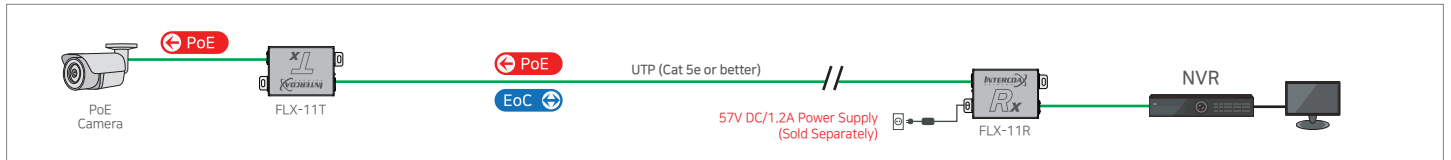


Applications

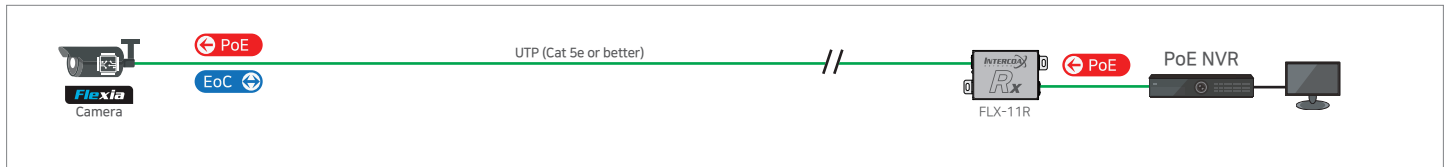
[Simply IP and PoE over UTP Cable]



[High Power over UTP Cable]



[Flexia Camera]



Specification

Model		FLX-11T	FLX-11R
Interface	Flexia	1 x RJ45 - Long Reach	
	Ethernet	1 x RJ45 - 100 Base-T	
Transmission Rate		100Mbps Full Duplex (100Mbps between Intercoax devices)	
Transmission Distance	Flexia	Up to 500m (2 Pair of Cat.5e)	
	PoE	Up to 500m (4 Pair of Cat.5e / 7W Camera)	
LED Indication	Power	1 x Power On (Green)	
	Flexia	1 x Data (Blue)	
	Ethernet	1 x Data (Green)	
	PoE	1 x PoE On (Green)	
Power	Input	Flexia or DC48V~57V	PoE Switch or DC48V~57V
	PoE Output	IEEE802.3af (PoE), IEEE802.3at (PoE+), with 57V Power Adaptor	PoE Not Supported Flexia Only
Mechanical	Dimension	82.4(L) x 61.6(W) x 24(H)mm	
	Weight	70 g	
Environment	Operating Temp	-20 ~ 60°C	
	Storage Temp	-30 ~ 80°C	
	Relative Humidity	10% ~ 90%	
Compliance	Certification	FCC, CE, KC, RoHS	
	Surge Protection	IEC 61000-4-5 4kV(1.2 / 50us), 2kA(8 / 20us)	
Optional Accessories		57VDC / 1.2A External Power Supply	

Caution

- DO NOT USE Non-PoE camera on Tx. (PoE IP Camera Only)
- Please install the device following the installation guide.
- Do not touch the device and cable with wet hands.
- Keep away from moisture and shock.
- Do not install near any heat sources such as radiators, heat registers, stoves or other apparatus that produce heat.
- Indoor use only. (Use waterproof junction box when it is used in outdoor)
- Do not use for other purposes.
- Do not disassemble or modify this device.
- Do not put any sticker or paint on it.
- If this device is defective or malfunctioning, please unplug the power source immediately and contact dealer or service center.
- Please use the rated power supply for the product.
- Connect DC power to this device first and then to AC outlet when using DC power supply.

Warranty

- This device has passed the quality control and product inspection.
- Please install and use according to the installation guide.
- The warranty period for this product is 24 months from the date of purchase.
- If this device is defective or malfunctioning, please unplug the power adapter immediately and contact dealer or service center.
- Any damages or breakage from user's abuse, accident, modification or natural disasters will not be covered manufacturer's warranty.



INTERCOAX
NETWORK

Please visit below website for more detailed information.

Web: <http://www.intercoax.com> Tel: +82. 31. 365. 3133~4

E-mail: info@intercoax.com Fax: +82. 31. 365. 3135

Intercoax Co., Ltd.

This device complies with part 15 of the fcc rules. Operation is subject to the following two conditions :

- (1) This device may not cause harmful interference, and
- (2) This device must accept any interference received including interference that may cause undesired operation