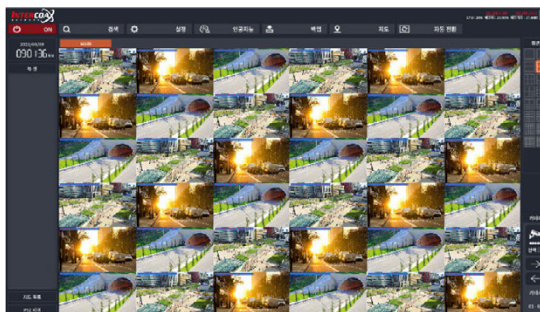
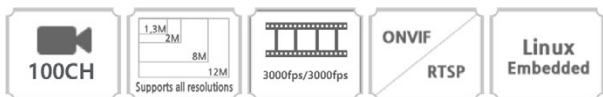


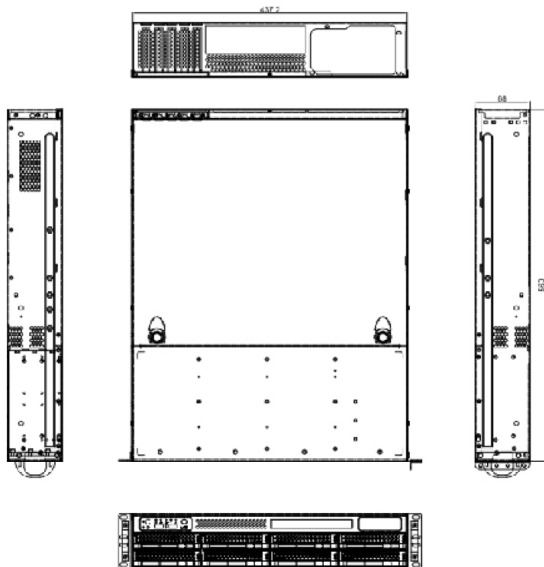
# AP-SLPR100 ▶ 100-channel PC base 8Bay NVR



### ▲ Features

- Linux 64bit OS ( high reliability and security)
- ONVIF / RTSP Standard Protocol (ONVIF Profile S)
- Up to 8 HDD drawers (3.5")
- Easy firmware upgrade
- Channel organization on screen (drag and drop movement)
- Instant replay on live screen (search), snapshot backup function
- Supports Viewset (Live Favorite, Search Favorite)
- Supports P2P, QR code
- Supports search function in smartphone application
- Supports various recording modes, such as Permanent / Motion / Event (AI) / Schedules, etc
- Smooth control system through map display function
- Artificial intelligence (AI) image analysis function (optional)
- Time, bookmarks, artificial intelligence events, thumbnail, smart search
- LPR recognition / Face detection / Face recognition / Object detection / Entrance detection
  - Access detection / Letter recognition / Organic detection / Fire detection / Vehicle accident detection, etc.
  - Supports AI function

### ▲ Dimension



### ▲ Specifications

| Model                            |                    | AP-SLPR100   |
|----------------------------------|--------------------|--|
| Video Input                      | IP Camera Input    | 100 CH   |
|                                  | Resolution         | CIF~12M  |
| Video Output                     |                    | VGA x 1 and HDMI x 1 (or DVI x 1)  |
| O/S                              |                    | Linux 64bit (Embedded)   |
| CPU                              |                    | Intel Core Processor   |
| Memory (RAM)                     |                    | DDR4 32GB and above  |
| Live                             | Split Screen       | 1,2,4,6,7,9,10,13,16,25,36,49,64   |
|                                  | Screen Mode        | Split Screen Mode, Full Screen Mode, Switch Screen Mode, Viewset (Favorite)  |
| Recording                        | Codec              | H.265, H.264, MPEG4, MJPEG   |
|                                  | Recording Bit rate | 450Mbps, Expandable (Optional)   |
|                                  | Resolution         | CIF~12M  |
| Search                           | Recording Mode     | Continuous, Motion Detection, AI (event), Schedule   |
|                                  | Search Mode        | Time, AI event, Bookmark, Thumbnail, Built-in Smart Search (double motion), View Set (favorite)  |
| Applications                     | Playback           | Playback (speed: x1 through x128), Move (front/back, one frame)  |
|                                  | VMS                | Live, Search, Backup, Event Manager, E-Map, Multi Monitor, PAN/TILT/ZOOM Control, Remote NVR Settings, Remote NVR Upgrade  |
|                                  | Web(IE)            | Live/Search 16Ch, PAN/TILT/ZOOM Control  |
| Network                          | Smart Phone        | iPhone/Android App/P2P   |
|                                  | Interface          | 10/100/1000 Base-Tx Ethernet (RJ45)  |
| Storage (Option)                 | Internal Mounting  | Up to 8 HDD drawers (3.5")   |
|                                  | External Storage   | eSATA, iSCSI   |
| Date/Time Synchronization        |                    | Synchronization via NTP Time Server / NTP Server Function Support  |
| Alarm                            |                    | E-mail and FTP notifications, Alarm out, Network loss, Information messages about video loss, Pop-up cameras, P2P push alarms  |
| IP Camera Protocol               |                    | IP Camera and ONVIF / RTSP-supported IP Camera   |
| VA                               |                    | Intelligent AI image analysis license, License Plate Recognition, Intrusion Detection, Access Detection, Object Detection, Face Detection, Face Recognition, Letter Recognition, Organic Detection, Fire Detection, Vehicle Accident Detection, etc. |
| Operating Temperature / Humidity |                    | 5℃~40℃ / 0%~90%  |
| Power Supply                     |                    | 220V~240V 50/60Hz / Max 600W (Active PFC, EMI Built-in Filters)  |
| Dimensions                       |                    | 437.2(W) x 88(H) x 560(D) mm   |
| Weight                           |                    | 10.5 Kg (without HDD)  |

▶ When using a KVM switch, a USB-type product must be used (No PS/2 type)