

IXIT-8060DP / IXIT-1612DP

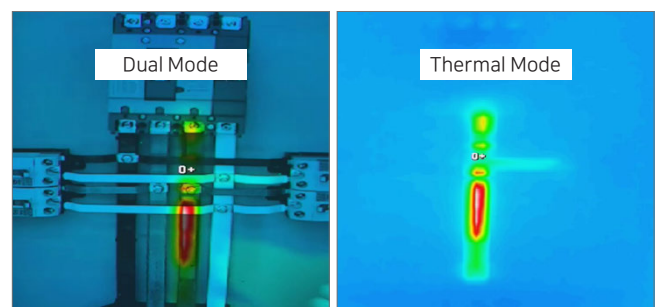
Dual Thermal camera



▲ Features

- Dual Sensor (Thermal+Sensor) IP Camera
- 3 Mode Display Support (Visual / Thermal / Overlay)
- White LED (Manual operation or temperature alarm)
- IP67 Ingress Protection
- Onvif-compliant: Support Any NVR&VMS
- Dedicated Temp. Monitoring S/W T-VMS

▲ Display Mode



▲ Specification

Model		IXIT-8060DP	IXIT-1612DP
Thermal Image	IR Sensor Frame Rate	< 9 Hz	
	IR Sensor Resolution	80 (h) × 60 (v) Pixel	160 (h) × 120 (v) Pixel
	Spectral Range	LWIR, 8 to 14 μm	
	Field of View (FOV)	51° HFOV, 63.5° diagonal (f/1.1 silicon doublet)	56° HFOV, 71° diagonal (f/1.1 silicon doublet)
	Temperature Sensitivity	< 50 mK (0.05°C)	
	Temperature Range	Low Gain Mode: -10 °C ~ 140 °C High Gain Mode: -10 °C ~ 450 °C	
Visible Image	CMOS Sensor	Sony Diagonal 6.15mm CMOS Progressive Scan	
	Effective Pixels	3096(H) x 2202(V) : 6.82M Pixel	
	Frame Rate	30 fps	
	Resized resolution	2592X1944, 2048X1536, 1600X1200 (Visible Image only) 1280X720, 1024X768, 640X480	2592X1944, 2048X1536, 1600X1200 (Visible Image only) 1920X1080, 1280X720, 1024X768, 640X480
	Multi User Access	8 (RTSP Streaming)	
Others	Alarm Out	1 port(Dry contact, relay out)	
	Operating Temperature	-10°C ~ +60°C (14°F ~ +140°F)	
	Power	PoE(802.3.af), DC12V	
	Power consumption	5W	
	IP Level	IP 67	
	Demension (wxhxd)	80x130x35(mm), 80x130x45mm Foot (Mount Bracket) Equipped	
	Weight	380g	

▲ Dimension

