

IXIT-8060DH / IXIT-1612DH

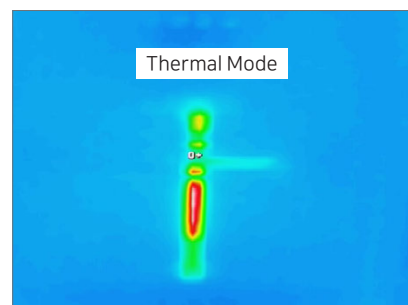
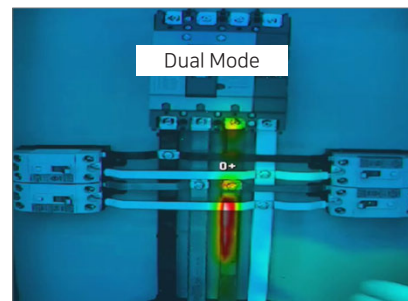
Dual Thermal camera



▲ Features

- Dual Sensor (Thermal+Sensor) IP Camera
- 3 Mode Display Support (Visual / Thermal / Overlay)
- Onvif-compliant: Support Any NVR&VMS
- Dedicated Temp. Monitoring S/W T-VMS
- Special aluminium housing for outdoor use
- Full waterproof (IP66) outdoor housing
- Sun shield, Heater, Blower (option)
- IR Lamp (option)

▲ Display Mode



▲ Specification

Model		IXIT-8060DH	IXIT-1612DH
Thermal Image	IR Sensor Frame Rate	< 9 Hz	
	IR Sensor Resolution	80 (h) × 60 (v) Pixel	160 (h) × 120 (v) Pixel
	Spectral Range	LWIR, 8 to 14 μm	
	Field of View (FOV)	51° HFOV, 63.5° diagonal (f/1.1 silicon doublet)	56° HFOV, 71° diagonal (f/1.1 silicon doublet)
	Temperature Sensitivity	<50 mK (0.05°C)	
	Temperature Range	Low Gain Mode: -10 °C ~ 140 °C High Gain Mode: -10 °C ~ 450 °C	
Visible Image	CMOS Sensor	1/3.2 inch Sony CMOS Progressive Scan	
	Effective Pixels	1280(H) X 960(V) : 1.23 M	
	Frame Rate	30 fps	
	Resized resolution	2592X1944, 2048X1536, 1600X1200 (Visible Image only) 1280X720, 1024X768, 640X480	2592X1944, 2048X1536, 1600X1200 (Visible Image only) 1920X1080, 1280X720, 1024X768, 640X480
	Multi User Access	8 (RTSP Streaming)	
Others	Alarm Out	1 port(Dry contact, relay out)	
	Operating Temperature	-10°C ~ +60°C (14°F ~ +140°F)	
	Power	PoE(802.3.af), DC12V	
	Power consumption	3.9W	
	IP Level	IP 66	
	Demension (wxhxd)	outside : 142x128x322(mm) inside : 70x75x160(mm)	
	Weight	1.96kg	